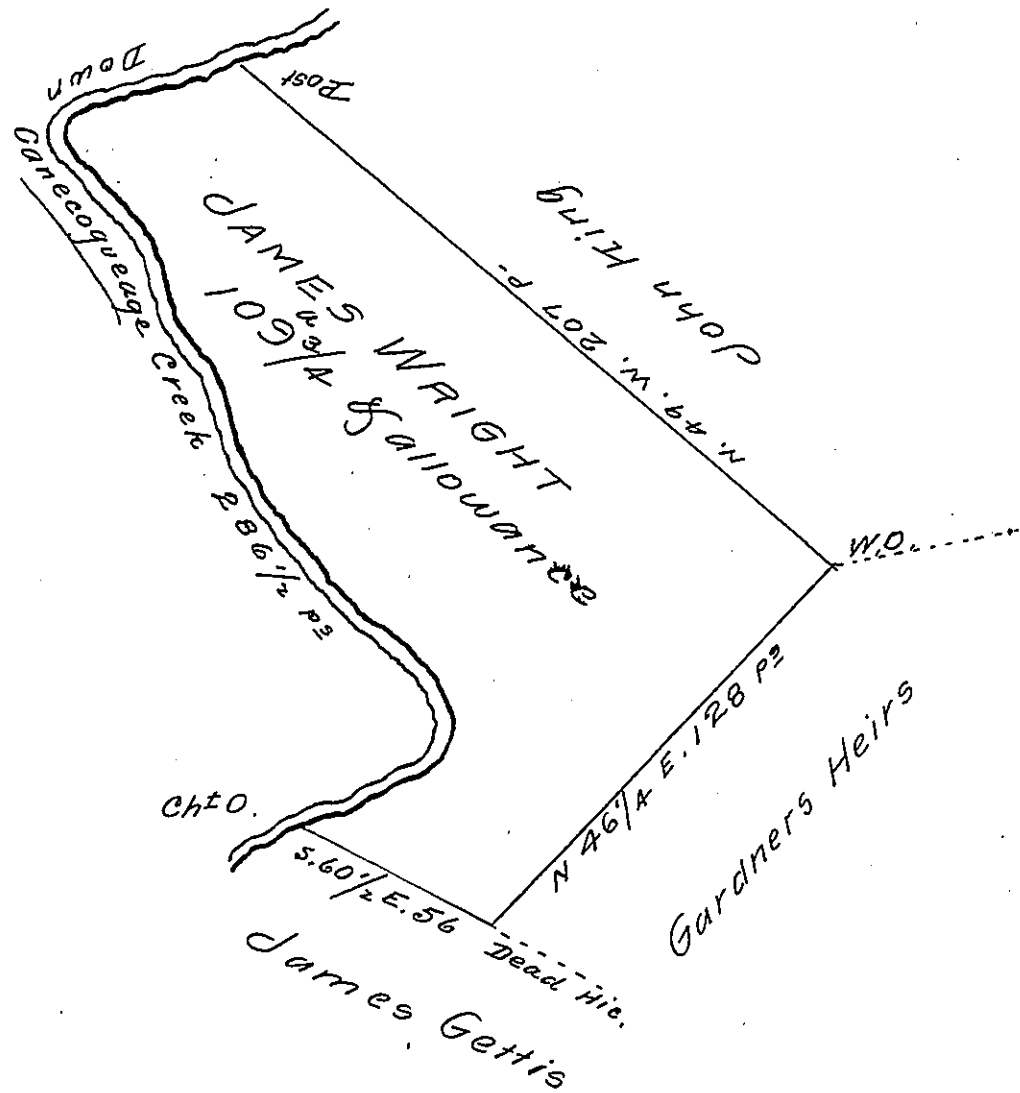


Land late of Ch<sup>o</sup> Mc Dowell



Cor<sup>s</sup> of Dist<sup>s</sup> on the Cr.

S	77	W	44 1/2 P.
S	18	E	8
S	27	E	89
S	21	E	24 1/2
S	45	E	68
S	36	W	20
S	67	W	32 1/2
			<u>286 1/2 P.</u>

A Draft of a Tract of Land situate in Peters Township in the County of Franklin (formerly in the County of Cumberland) Containing One hundred and nine acres and Three quarters of an acre and the allowance of six p Cent for roads &c.

Surveyed September 6<sup>th</sup> 1795 in pursuance of a Warrant granted to James Wright bearing date the eighth day of June 1762

Matt<sup>o</sup> Henderson D.S.

To Daniel Brodhead Esquire  
Surveyor General of Pennsylvania

IN TESTIMONY that the above is a copy of the original remaining on file in the Department of Internal Affairs of Pennsylvania, made conformably to an Act of Assembly approved the 16th day of February 1833, I have hereunto set my hand and caused the Seal of said Department to be affixed at Harrisburg, this twenty-sixth day of June 1907

*Henry Howard*  
Secretary of Internal Affairs.